



One Park Taipei

Taipei, Taiwan

**Two towers facing Da-An Park
sets a new benchmark for luxury
high-rise living in Taipei.**



Location
Taipei, Taiwan

Date
2008-2018

Client
Yuan Lih Construction

Height
South Tower: 144.8 m / 35 stories
North Tower: 130.3m / 31 stories

Gross Floor Area
37,480 m²

Co-Architect
CT Chen Architects and Associates

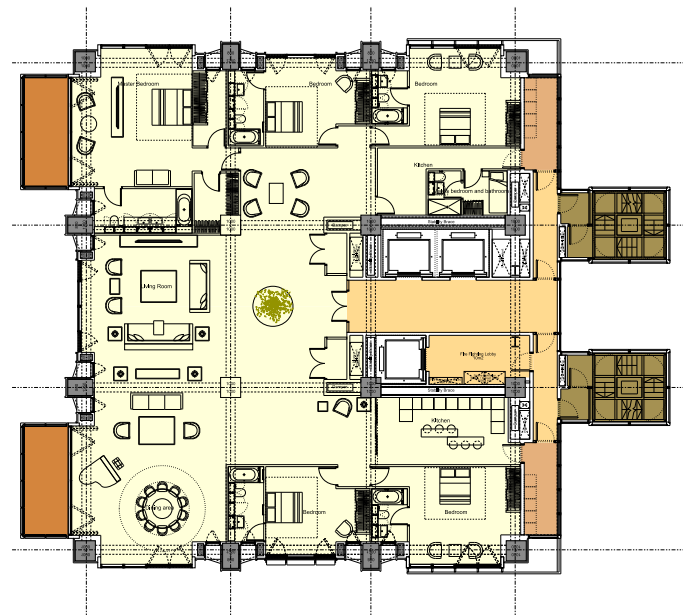
Structural Engineer
Evergreen Construction

Services Engineer
Continental Engineering Consultants, Inc

Landscape Architect
Environmental Arts Design

Award

2012
CTBUH Award of Excellence in the 100-199m category



RSHP has designed two high-rise residential towers adjacent to Da-An Park in the city of Taipei. The site is located to the east side of Da-An Park along the Jianguo Road. The towers are two of the highest residential buildings in Taipei. The design has set a new benchmark in high-rise residential projects in Taiwan, in terms of location, views and aspect, spatial quality, landscape design and public amenities. The external ground floor area provides private landscaped spaces as well as swimming pools for residents of each tower.

The towers – one at 35 storeys and the other at 31 storeys above ground – accommodate apartment types ranging from 300 m² to 600 m². There are two apartments per floor for the small units and one apartment per floor for the large units at the top of the towers. Each apartment benefits from panoramic views of the park with generous external terraces. The larger units have large double height terraces. Whilst the park elevations are articulated by external terraces, the north and south elevations are articulated by projecting windows and external shading elements. The east elevation offers unique city views of Taipei CBD and Taipei 101. This elevation is further accentuated by the colourful and slender stair cores.