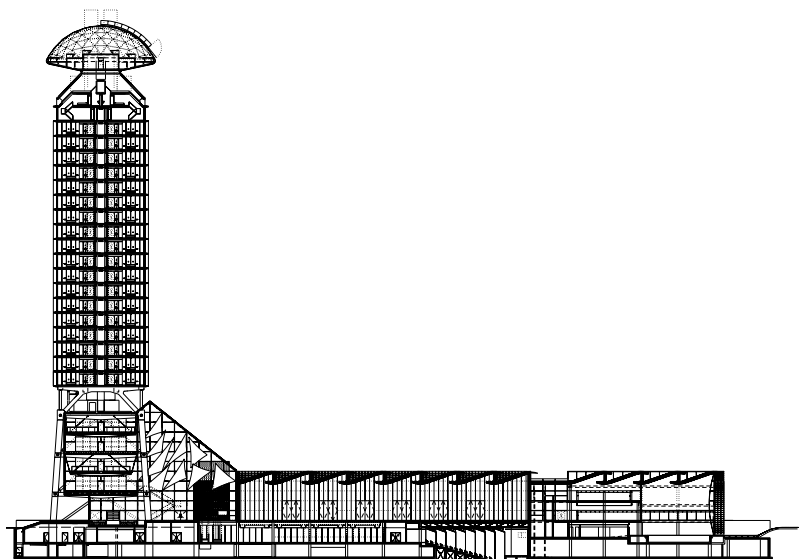
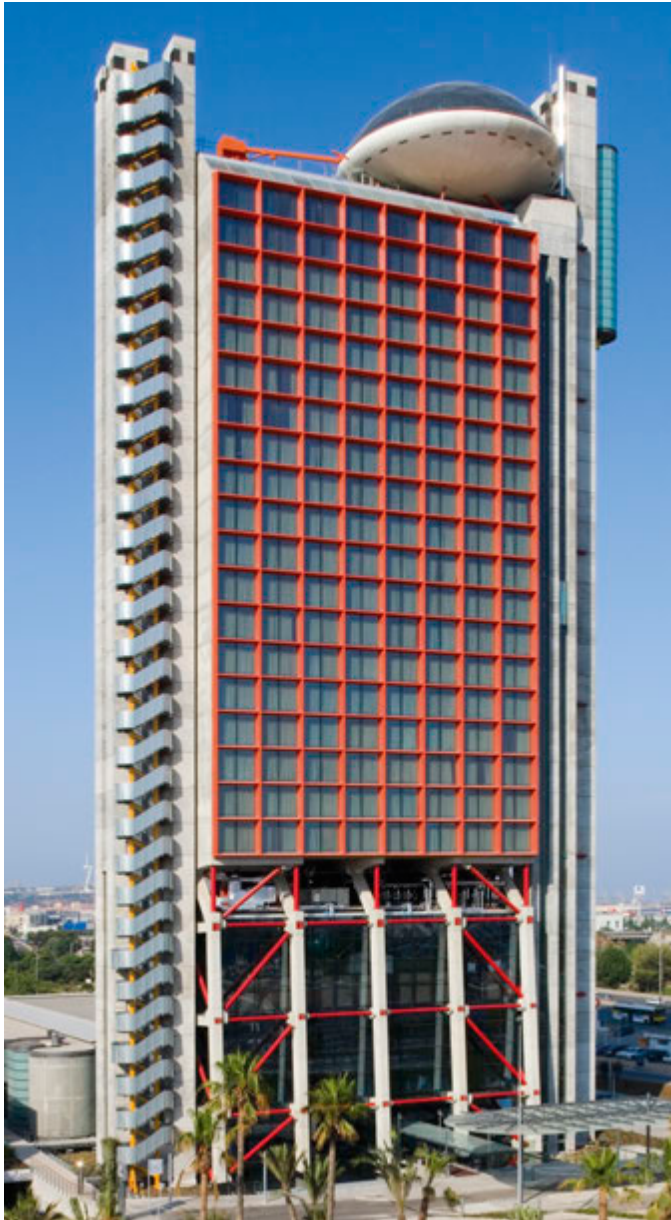




Hesperia Hotel & Conference Centre

Hospitalet, Spain





Place
Hospitalet, Spain

Date
1999—2006

Client
Hesperia Hotels SA

Cost
£30 million

Gross Internal Area
14,000 m² (Hotel), 5,900 m² (Sports Club), 4,500 m² (Conference Centre)

Area
50,000 m² (Including Park)

Structural Engineer
Buro Happold/Obiol, Moya y Asociados, Brufau y Asociados

Services Engineer
BDSP/J G y Asociados

Quantity Surveyor
Atkins, Faithful & Gould/ G3 Tecnics

Main Contractor
Construcciones Castro

Awards

2008
International High Rise Award



The major programmatic elements within the design are architecturally expressed through the separation and articulation of each element

RRP's Hesperia Hotel and Conference Centre forms a new landmark in the rapidly developing urban centre of L'Hospitalet, Catalonia's second largest city with 240,000 inhabitants. The brownfield site is 10km west of Barcelona, flanking la Gran Via, a motorway which leads out to the airport and is to be transformed into an attractive boulevard – and a gateway to Barcelona.

Fast traffic will be contained in a sunken section, making local traffic the only traffic at street level. The possibility of decking over the sunken section offers the potential for a sequence of vibrant new public piazzas.

The design for the scheme places lift and service towers at the edge of the building as 'servant spaces', with the lower floors of the 30-storey tower devoted to public spaces within an open and transparent 'container'. The scheme comprises a 304-room five-star hotel, a 3,000 m² conference centre accommodating 1,800 people, a 500-seat auditorium, 1,500 m² headquarters for the Hesperia company and a 4,500 m² sports club, with a swimming pool and gym.

A public square extends below the tower connecting it to the adjacent low-rise buildings. One of the restaurants is housed in a striking glazed 'dish' located at roof level.