



Taoyuan Airport T3

Taipei, Taiwan

**[Terminal 3] will create brand new
travel experiences for passengers
and become the pride of all
Taiwanese people**

David Fei, President & CEO of
Taoyuan International Airport Corporation



Location
Taipei, Taiwan

Date
2015-

Client
Taoyuan International
Airport Corporation

Gross Area
640,000m²

Co-Architect
Fei & Cheng Associates

Structural Engineer
CECI Engineering
Consultants / Arup

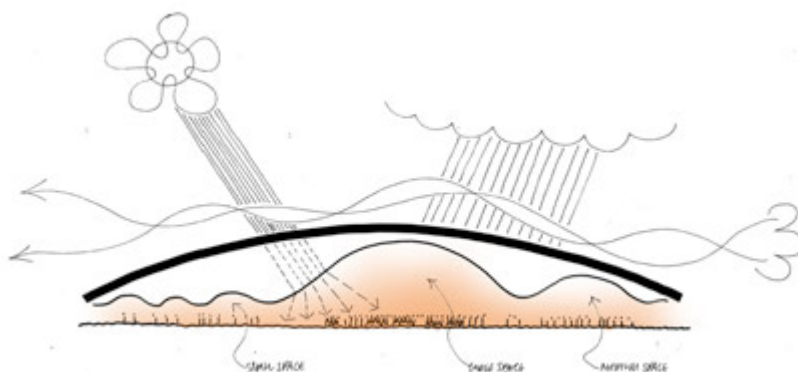
Landscape Architect
Gillespies

Transport Consultant
OTC

Aviation Services
Fraport

Retail Consultant
The Design Solution

**Baggage Handling
Consultants**
BNP Associates



The design for Taoyuan Terminal 3 synthesises the practice's previous major airport experience with the specific brief. It has brought together the flexibility of the single span, loose fit volume of Heathrow Terminal 5 with the warmth and human qualities of the flowing interior spaces of Barajas Terminal 4. The result is a unique, dynamic and fluid architecture that allows for easy adaption and future transformation of airport functions without compromising the passenger experience or the architectural integrity.

The RSHP proposal is inherently simple in its concept. The design is inspired by Taiwan's beautiful landscapes, the seas surrounding it, its rhythms of nature and life to create a series of unique interior places designed for their purpose and protected beneath an elegant hard shell roof. Within, a soft inner surface is malleable and dynamic to celebrate and form the ever changing spaces below. The nature of the interior spaces whether grand, intimate, uniform or dramatic and the

extent of those spaces too can be changed. This adjustable scaling will give passengers spatial clarity in all areas; large, small, busy or quiet, to reduce stress and improve wellbeing and comfort. This flexibility ensures the airport is always at its best and suitably presented as the principal gateway to and from Taiwan to the rest of the world.

This terminal will be the first of a new generation, a highlight in the journey for new and seasoned travellers alike. It will offer arriving passengers an equality of spatial experience to those departing. Its rational plan arrangement is forecast to deliver minimum connection times of just 40 minutes, the best in the region, with simple way-finding and airside connectivity.