



Jean Prouvé '6m x 6m Demountable House'

Various Locations

Modernising the design for use as a holiday home, RSHP's adaptation is based on the original plans with the addition of external bathroom and kitchen pods and a series of service trolleys providing hot water and solar-powered electricity



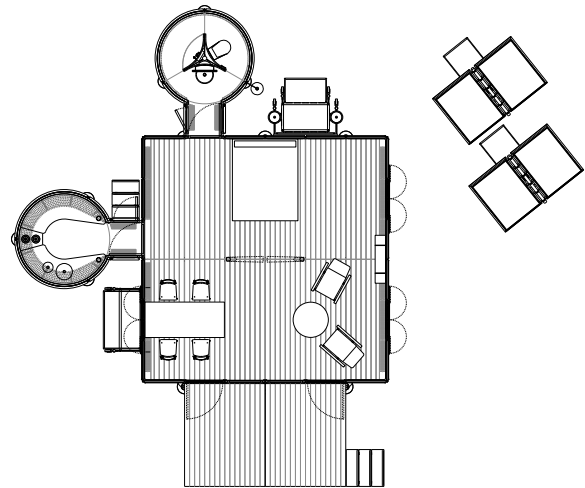
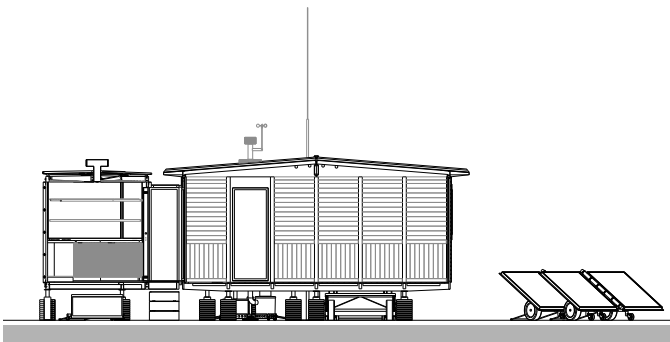
Place
Various locations

Date
2013-2015

Gross Internal Area
44 m²

Client
Galerie Patrick Seguin

Architect
Rogers Stirk Harbour + Partners



Galerie Patrick Seguin commissioned RSHP to adapt a design for a '6m x 6m Demountable House' by the self-taught French architect and designer Jean Prouvé, modernising it for use as a holiday home.

The 6x6 house is an important example of Prouvé's 'constructional philosophy' of architecture based on an aesthetic of functionality and fabrication. Made entirely of wood and metal, it could be transported and dismantled easily and was first built to re-house war victims in the Lorraine region of France in 1944. Components were shipped directly to bomb-devastated villages where they could be assembled by two people in a day to provide much needed shelter for the homeless.

RSHP's adaptation adds living facilities incorporated into external bathroom and kitchen pods as well as service trolleys providing drinking water, heating and solar-powered electricity. Adding the pods to the perimeter of the original building maintains and respects the flexibility of the

original internal layout. The trolleys ensure the house has an independent supply of water and energy so it can be autonomous in any environment.

RSHP's design replaces six of the original wooden panels to provide a link bridge connection to each pod and an entrance made up of four glazed panels that bring light into the main living space and open onto a new external decking platform. The decking is controlled through a counter balance system so it can be lowered for use as an outdoor space or raised to act as a shutter. In the spirit of the original design, all components can be manually assembled and dismantled easily on site and different panel locations can be configured to suit specific locations.

The RSHP adaptation was designed to be showcased at Art Basel 2015 before transferring to an outdoor setting. As well as a new holiday retreat, it has potential to become a blueprint for future transportable and demountable refugee housing in keeping with Prouvé's original vision.